

Global Patient Survey 2018: Mapping the Kidney Cancer Patient Experience Worldwide

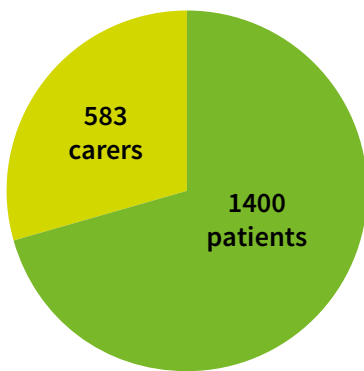
Snapshot



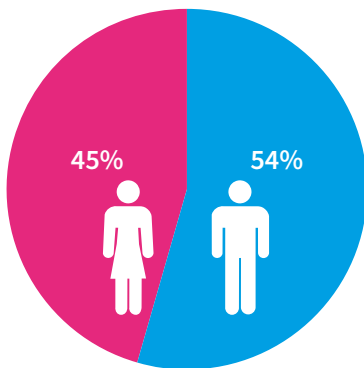
The survey included **1983** respondents in **43** countries.

The Global Patient Survey included respondents from Canada (12%), France (12%), the United States (12%), South Korea (12%), Japan (10%), the United Kingdom (9%), Mexico (7%), India (7%), Germany (6%), Brazil (3%), The Netherlands (2%), Australia (2%), Finland (2%), Other (4%).

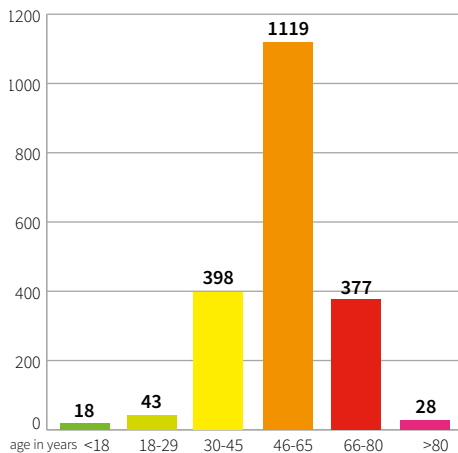
Participants



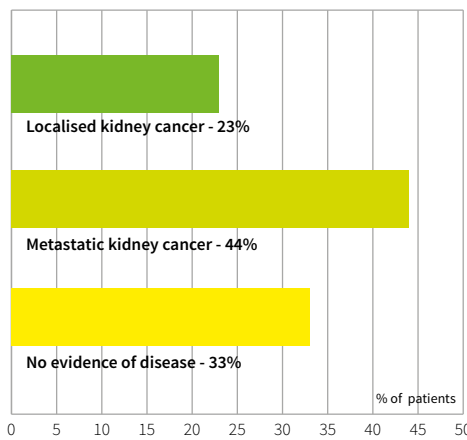
Gender



Age of Respondents

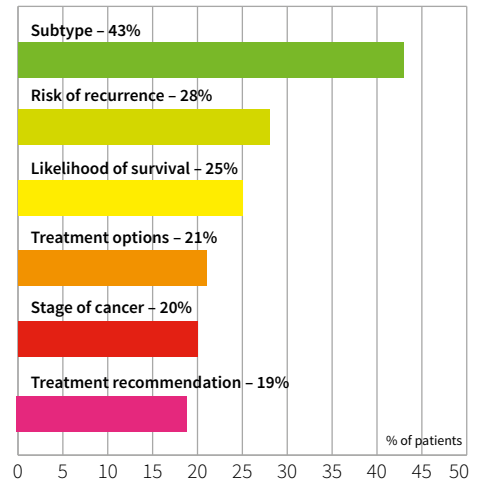


Stage of Disease



Knowledge and Understanding

At the time of diagnosis, patients had no understanding of their:



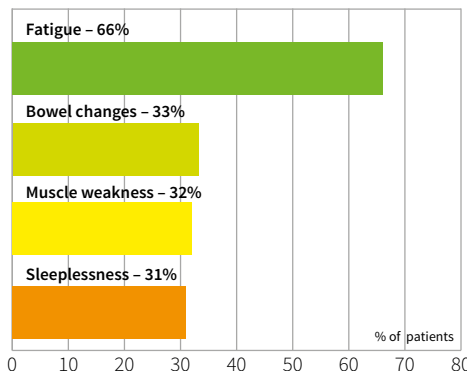
Physical Conditions

92% of patients said their physical well-being was impacted since the initial diagnosis.

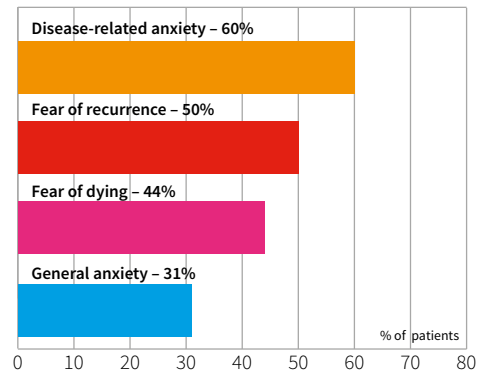
Psychosocial Conditions

96% of patients said they were impacted by psychosocial issues.

Most common conditions included:



Most common conditions included:



Global Patient Survey 2018: Mapping the Kidney Cancer Patient Experience Worldwide

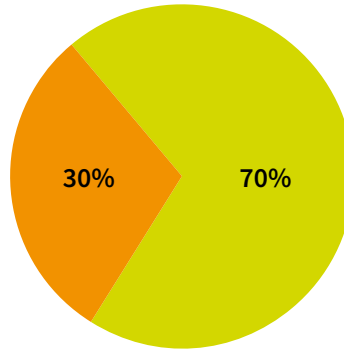
Snapshot



Clinical Trials

30% of patients were asked to participate in a clinical trial.

Of those asked, **86%** agreed and the majority were satisfied with their experience.

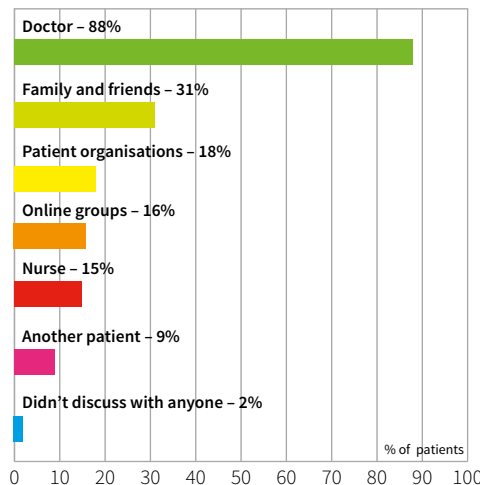


70% of patients had never been asked to participate in a clinical trial.

Of those, **89%** said it was fairly likely they would have participated if they had been asked.

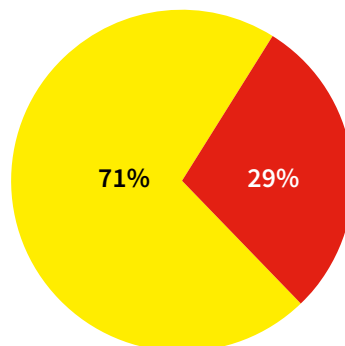
45% of these patients were being treated in a major cancer centre and **37%** at a local or community hospital.

Patients discussed clinical trials with their:



Shared Decision Making

71% of patients were involved in their treatment decisions to some degree.



29% of patients were not engaged in their treatment decisions at all.

Where were they treated?

Of patients who reported "my doctor decided for me" **34%** were treated in a community or local hospital and **45%** in a major cancer centre.

What stage was the cancer?

Patients of all stages were not involved in their treatment decisions:

- **25%** were stage 1 or 2
- **20%** were stage 3 and
- **30%** were stage 4.

For more information and the complete Global Patient Survey Reports, visit:
www.IKCC.org/global-patient-survey.

We need to talk about Kidney Cancer.